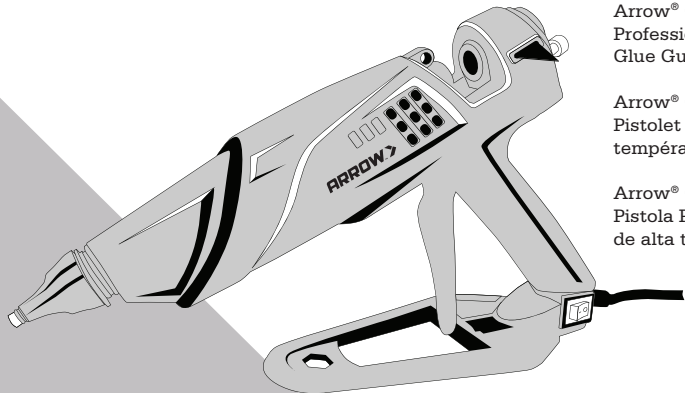


ARROW ™
HOW IT ALL COMES TOGETHER

GT300™



Arrow® GT300™
Professional High Temp
Glue Gun

Arrow® GT300™
Pistolet à colle haute
température professionnel

Arrow® GT300™
Pistola Profesional de cola
de alta temperatura

ENGLISH

GENERAL TOOL SAFETY WARNINGS 3-4
 DEFINITION OF SYMBOLS USED ON TOOL & FUNCTIONAL DESCRIPTION 5
 ASSEMBLY AND OPERATING INSTRUCTIONS 6-7
 TOOL MAINTENANCE AND ACCESSORIES 8
 WARRANTY 9

3-4



To avoid injury and misuse, please read the instruction manual before operation.

Pour éviter tout risque de blessures et une mauvaise utilisation, prière de lire le manuel d'utilisation avant l'utilisation.

A fin de evitar lesiones y mal uso, lea el manual de instrucciones antes de usar la herramienta.

5

6-7

8

9



Obey all safety messages that follow this symbol to avoid possible injury or death.

Respecter tous les messages de sécurité suivant ce symbole pour éviter tout risque de blessures ou de décès.

Observe todos los mensajes de seguridad que aparecen junto a este símbolo para evitar posibles lesiones o la muerte.



Always wear safety glasses when operating the tool.

Toujours porter des lunettes de sécurité en utilisant l'outil.

Siempre use anteojos de seguridad cuando utilicé esta herramienta.



Class II Tool
 Outil de classe II
 Herramienta clase II



WARNING When using electric tools, basic safety precautions should always be followed to reduce the risk of fire, electrical shock and personal injury.

CAUTION: Read Safety Rules and Operating Instructions Carefully.

READ ALL SAFETY INSTRUCTIONS:

- Do not touch heated nozzle area of glue gun or melted glue.** Touching any heated portions of the product may result in personal injury, such as a burn.
- Keep work area clean and keep electrical contacts clear of debris. Work environment should be clean, dry, well lit and clear of flammable materials.** Cluttered, dark areas and flammable materials may result in a risk of fire, electric shock or personal injury.
- Keep children and bystanders away while operating the tool.** Distractions can cause you to lose control.
- Always use safety glasses.** Following this rule may reduce the risk of eye injury.
- Do not harm the cord. Never use the cord for carrying, pulling or unplugging the glue gun tool. Keep cord away from heat, oil, sharp edges or moving parts.** Damaged or entangled cords increase the risk of electric shock.
- Glue gun tool plug must match the outlet. Never modify the plug in any way. Do not use any adapter plugs with earthed (grounded) glue gun tools.** Modifying plug and failure to use proper outlet increases risk of electric shock.
- Avoid body contact with earthed or grounded surfaces such as pipes, radiators, ranges and refrigerators.** There is an increased risk of electric shock if your body is earthed or grounded.
- Disconnect tools when not in use.**
- Do not touch the glue stick or trigger except to dispense glue.** Inserting the glue stick into the glue gun using too much force can cause hot glue to unexpectedly discharge from the nozzle. Following this rule may reduce the risk of accidental glue discharge.
- Do not expose this tool to rain or wet conditions.** Water entering a corded electric tool increases the risk of electric shock.
- When not in use, **the tool should be stored indoors.**
- Store idle glue gun out of the reach of children, and do not allow persons unfamiliar with the tool or these instructions to operate the glue gun.** Electric tools are dangerous in the hands of untrained users.
- Do not pull glue sticks from gun.** The feed mechanism may become damaged or impaired. If you desire to change types of glue, cut off protruding end of glue stick and feed the remainder through with the new type of glue stick.

GENERAL TOOL SAFETY WARNINGS

SAFETY PRECAUTIONS: WARNING!

- Do not touch heated nozzle or melted glue – Touching any heated portions of the product may result in personal injury, such as a burn. Operating temperature of the nozzle is 410°F ± 50°F (210°C ± 10°C).
- When glue is hot do not lay glue gun on its side. Always use base stand and wing stands provided.
- Property damage and personal injury may result from extended contact with tip of hot glue gun.
- Place the glue gun in the upright position when idle using the stand provided.
- Do not leave unattended.
- Keep away from animals. Children under the age of 8 should not play with the glue gun. However, the glue gun can be used by children aged 8 and above, as well as by a person with reduced physical, sensory or mental capabilities, provided that they are supervised and are instructed about using the glue gun in a safe way and understand the hazards involved.
- For general indoor household use only and should not be used for outdoor or industrial purposes.
- Do not use near water, liquids or rain.
- Do not use this product in areas where the risk of explosion is present.
- USE ONLY RECOMMENDED ATTACHMENTS. Use of an attachment not recommended or sold by the manufacturer may result in a risk of fire, electric shock or personal injury.
- UNPLUG POWER CORD when not in use.

- Turn off glue gun by placing the switch to the OFF position (o) (right) and unplug glue gun or base stand when not in use.
- Allow glue gun to cool before storing.
- Do not try to remove unused portion of glue sticks from glue gun after use.
- Do not use a damaged glue gun.
- Do not disassemble or attempt to repair this glue gun – service must be performed only by an authorized service representative.
- Children should not play with glue gun. However, this glue gun can be used by children aged 8 and above, as well as by a person with reduced physical, sensory or mental capabilities, provided that they are supervised and are instructed about using the glue gun in a safe way and understand the hazards involved.
- Cleaning and user maintenance should not be made by children.
- Do not carry the tool by the cord or pull cord to disconnect it from the outlet.
- If the supply cord is damaged, it must be replaced by the manufacturer, its service agent or similar qualified persons in order to avoid hazard.
- This appliance has a polarized plug (one blade is wider than the other). To reduce the risk of electric shock, this plug is intended to fit in a polarized outlet only one way. If the plug does not fit fully in the outlet, reverse the plug. If it still does not fit, contact a qualified electrician. Do not modify the plug in any way.

DEFINITION OF SYMBOLS USED ON TOOL & FUNCTIONAL DESCRIPTION

FUNCTIONAL DESCRIPTION

V Volts
A Amperes
Hz Hertz
~ Alternating Current



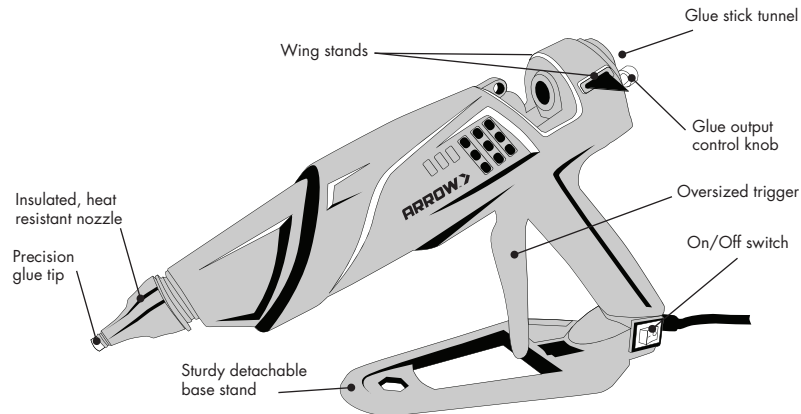
Obey all safety messages that follow this symbol to avoid possible injury or death.



Always wear safety glasses when operating the tool.



Class II Tool



IMPORTANT When using electric tools, basic safety precautions should always be followed to reduce the risk of fire, electrical shock and personal injury.

ASSEMBLY

MAKE SURE YOU HAVE READ ALL SAFETY INSTRUCTIONS.

- Attach the tool stand (see FIGURE 1).
- Always attach "wing stands" (see FIGURE 2-A) to the tool. They help prevent glue gun from back flowing if the tool is placed on its side.
- Screw glue control knob into the back of tool to adjust glue output (see FIGURE 2-C).
- Insert 1/2" (12 mm) diameter glue stick through tunnel at back of glue gun (see FIGURE 2-B).
- Press trigger several times until the glue stick is firmly set into the inlet tube.
- Plug the power cord into the wall electrical outlet.

TO OPERATE THE TOOL

- Press the glue gun on/off switch to the ON position (-) (LEFT), the on/off switch light will illuminate to indicate that the glue gun is ON.
- Allow glue gun to warm up for approximately 3-5 minutes.
- When first using your new glue gun it will take one (1) stick of glue to fill the melt chamber before glue begins to flow out.



If, when squeezing trigger, glue does not enter gun easily, DO NOT continue to squeeze trigger. Glue chamber may not be hot enough to melt glue fully.
Excessive squeezing of trigger may cause hot glue to back up and flow out of rear of gun, possibly causing severe burns.

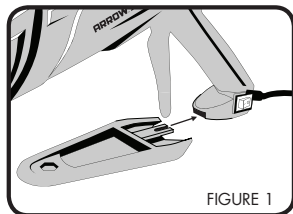


FIGURE 1

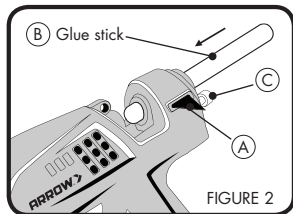


FIGURE 2

- After hot glue reaches working temperature, direct glue gun nozzle towards target area, squeeze trigger to apply melted glue.
- Insert new glue sticks when old one is totally drawn into the rear of the tool.
- Apply hot melt glue by continuous pressure on the trigger.

NOTE: the rate of glue can be controlled by the rate at which pressure is applied to the trigger during application and how far the trigger is pulled. Slow steady pressure on the trigger will reduce the rate of glue flow and produce a long, thin bead of glue. Squeezing the trigger quickly with high pressure will increase the rate of glue flow and produce a heavy short bead of glue.

SPECIAL FEATURE: Control knob provides the ability to control the glue output. Turn knob in or out to adjust output of glue (see FIGURE 2-C).

- Once hot glue is applied to workpiece, apply pressure to the work piece for approximately 15 seconds. Use of clamps or other holding devices is not necessary. Clean surfaces are best for bonding.
- Repeat glue application throughout project as needed.
- During periods of non-use, make sure the on/off switch is pressed to the OFF position (o) (RIGHT), the on/off switch light will turn off to indicate that the glue gun is OFF.
- Unplug the glue gun power cord from the electrical power outlet when finished.

Do not attempt to remove unused adhesive from the glue gun after use. Any unused adhesives can be stored in the gun, and will reheat for use later.

TIPS ON USING

1. The working time of hot melt glue can be extended to fifty to sixty (50 to 60) seconds by applying the adhesive in large drops (1/2" diameter) or shortened to less than ten (10) seconds by extruding the adhesive in a thin line.
2. Large areas are difficult to bond because the adhesive frequently will harden before you have extruded the right amount.
3. Preheat surfaces, (especially metals) to improve bond strength. Direct sunlight will accomplish this.
4. The adhesive remaining in an unheated glue gun will re-melt upon heating.
5. Do not use on items that will be subject to temperatures above 140°F (60°C).
6. Do not use hot melt glue to hold hot heavy loads.
7. Some paints and stains can weaken the adhesive. You may need to paint or stain before gluing.
8. Always practice gluing on scrap pieces before final gluing on projects.

TOOL MAINTENANCE




The GT300™ tool is virtually maintenance free. Keep tool clean and free of dust. Wipe clean with a dry cloth; do not use harsh chemicals to clean. The GT300™ tool contains no user serviceable parts. In the unlikely event that your tool should need service contact: Arrow Fastener Co., LLC 271 Mayhill Street, Saddle Brook, N.J. 07663 Tel. 201 843-6900

FOR BEST RESULTS USE ONLY ARROW® SUPERIOR QUALITY GLUE STICKS – AP10-4™ ALL PURPOSE CLEAR

For crafts, hobbies and general repairs.

Works on wood, ceramics, leather, canvas, fabrics, cardboard, plastics, metal, etc. Press surfaces together. Sets in thirty to sixty (30 to 60) seconds. Arrow All Purpose Clear glue sticks are available in packages of 12-10" sticks (AP10-4).

Arrow® Glue Sticks are available at retail outlets, hardware stores, lumberyards and wherever fine tools are sold.

| GT300™ | GT300™EU GT300™UK | GT300™AUS | | |
|---|---|---|--|---|
| 120V AC 60Hz 25W (Max. Inrush 300W) |  |  |  | 220V – 240V MADE IN TAIWAN 95C1 |

2 YEAR LIMITED WARRANTY

All parts of Arrow Fastener products containing electrical or electronic components or parts (other than batteries) are warranted to the original purchaser to be free from defects in material and workmanship for two years from the date of purchase.

Arrow Fastener will repair or replace, FREE OF CHARGE, during the warranty period, any product that proves to be defective in material or workmanship under normal use. If repair is not practical, Arrow Fastener may elect to replace the product or refund the purchase price in exchange for return of the defective product. For best performance, use genuine Arrow® glue sticks.

Please contact Arrow Fastener by calling 1-800-776-2228 or by writing: Arrow Fastener Company, LLC

271 Mayhill Street
Saddle Brook, NJ 07663

Attn: Product Warranty Department.

Labor charges incurred by the original purchaser to repair the product are excluded. This limited warranty does not cover damage to the product relating to normal wear and tear, misuse, abuse or neglect. No warranty is provided for the batteries.

Proof of purchase from the original purchaser must be made available to Arrow Fastener for all warranty claims. This is the exclusive warranty by Arrow Fastener Company for its products containing electrical or electronic components or parts (other than batteries).

Implied Warranties. TO THE EXTENT PERMITTED BY LAW, ANY IMPLIED WARRANTY, INCLUDING ANY WARRANTY

OF MERCHANTABILITY OR FITNESS FOR A PARTICULAR PURPOSE, IS LIMITED TO THE SAME DURATION AS THE APPLICABLE EXPRESS WARRANTY. Some states do not allow limitations on how long an implied warranty lasts, so the above limitation may not apply to you.

Limitation of Liability. Arrow Fastener SHALL NOT BE RESPONSIBLE FOR SPECIAL, INCIDENTAL OR CONSEQUENTIAL DAMAGES WHETHER ARISING OUT OF BREACH OF WARRANTY, BREACH OF CONTRACT, TORT, OR OTHERWISE. Some states do not allow the exclusion of incidental or consequential damages, so the above exclusion and limitation may not apply to you.

This limited warranty gives you specific legal rights, and you also may have other rights, which vary from state to state. In Canada, the above provisions are not intended to operate where prohibited by law and do not preclude the operation of any applicable provincial protection statute which may in certain circumstances extend the express warranty herein.

Australian customers: Our goods come with guaranties that cannot be excluded under the Australian Consumer Law. You are entitled to a replacement or a refund for a major failure and for compensation for any other reasonably foreseeable loss or damage.

You are also entitled to have the goods repaired or replaced if the goods fail to be of acceptable quality and the failure does not amount to a major failure. To obtain the benefits of this warranty, you must send the product securely packaged with proof of purchase and postage prepaid to:

Service Department, Arrow Fastener Co., LLC,
271 Mayhill Street, Saddle Brook, New Jersey 07663



For the GT300™ manual translation in French and Spanish please visit www.Arrowfastener.com

Pour le manuel de GT300™ traduit en Français et en espagnol veuillez visiter www.Arrowfastener.com

Para el manual de GT300™ traducido en francés y en español por favor visite www.Arrowfastener.com

Arrow Fastener Co., LLC
271 Mayhill Street, Saddle Brook, NJ 07663

©2017 Arrow Fastener Co. LLC
Rev 04/17